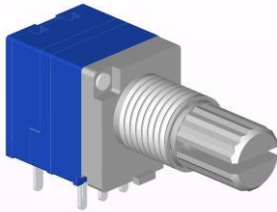


# 9mm Metal Shaft Rotary Potentiometer

**RK0971S**



## Part Number

**RK0971 S - B 50K, L- 20 KC/N=5**

Switch

Taper

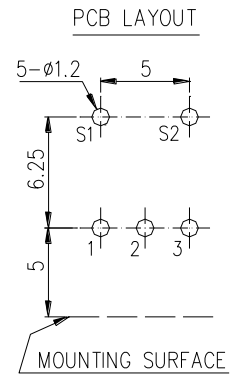
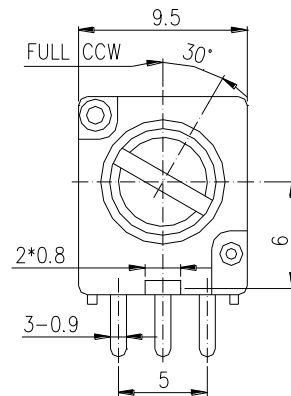
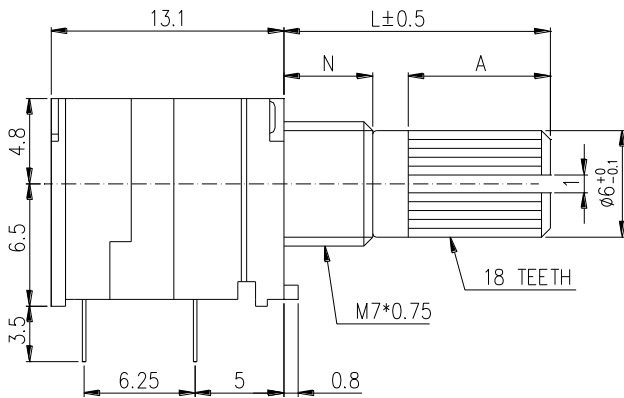
Resistance value

Shaft Length

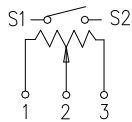
Bush Length

Shaft Type

## Dimensions

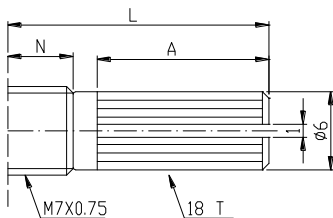


### CIRCUIT



## Shaft Type

### KC Type



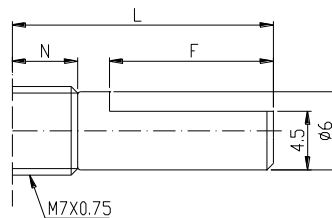
N=5mm

L	10KC	12.5KC	15KC	20KC
A	4	7	7	12

N=7mm

L	15KC	20KC	25KC
A	7	12	12

### F Type



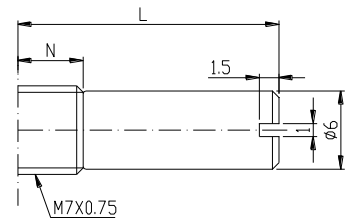
N=5mm

L	15F	20F
F	7	12

N=7mm

L	15F	20F	25F
F	7	12	12

### RE Type



N=5mm

L	8RE	10RE	15RE
---	-----	------	------

N=7mm

L	15RE
---	------

## 9mm Metal Shaft Rotary Potentiometer

### General

Operating temperature	-10 °C ~ +70 °C
Manual soldering	260 °C Max 3sec

### Electrical Characteristics

Total resistance	1K $\Omega$ ~ 500K $\Omega$
Resistance tolerance	$\pm 20\%$
Resistance taper	A B C W
Sliding noise	Less than 68 mV
Residual resistance	Less than 20 $\Omega$
Switch contact resistance	0.05 $\Omega$
Insulation resistance	More than 100M $\Omega$ at DC 250V
Rated power(W)	0.05W
Switch rated power	DC 16V / 1A
Max. Operating voltage	50V AC
Withstand voltage	1 Minute at AC 300 V

### Mechanical Characteristics

Total rotational angle	300° $\pm$ 5°(Switch angle $\leq$ 50°)
Rotational torque	20 ~ 250 gf.cm
Switch action	400 gf.cm
Rotational stopper strength	4Kgf.cm Max
Shaft push-pull strength	10Kgf.cm Max
Rotational life	10,000 Cycles. (Switch life: 10,000 Cycles)