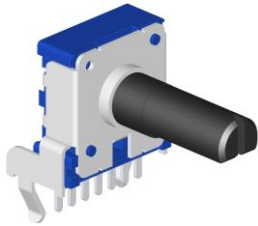




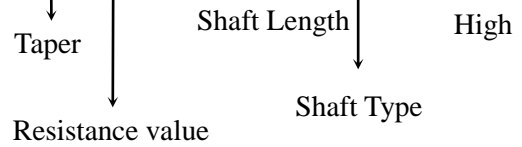
14mm Snap-in Insulated Potentiometers

RK1411G

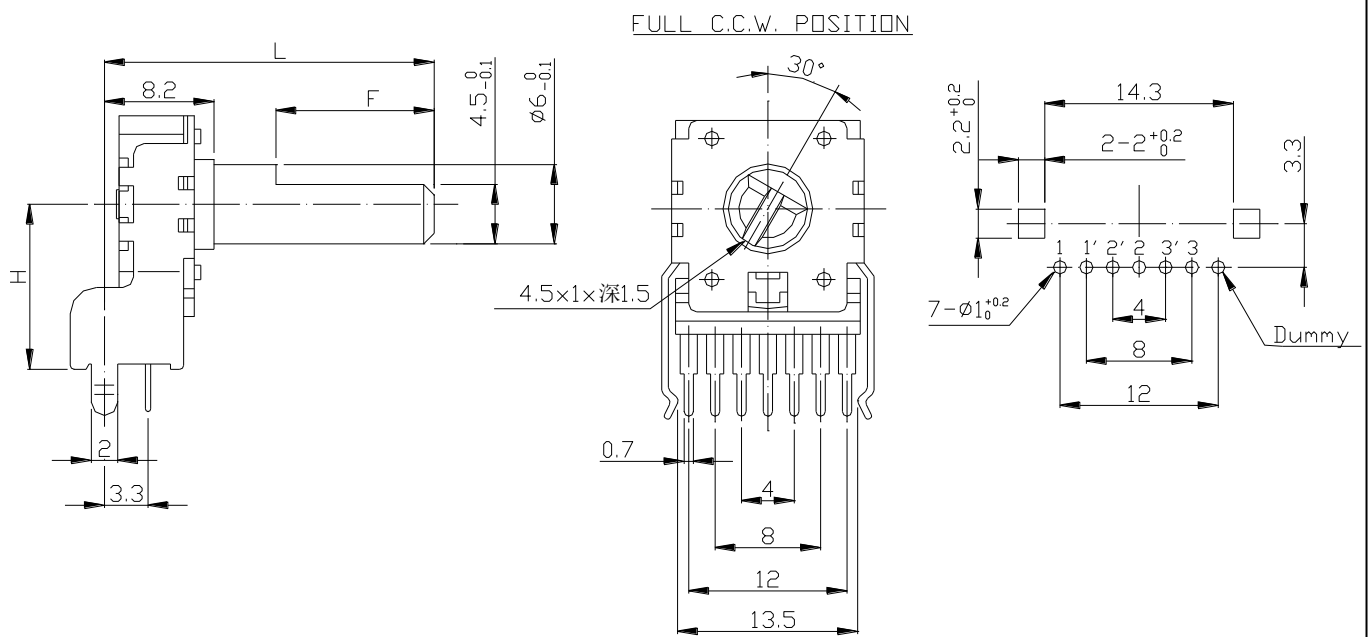


Part Number

RK1411G – B 50K , L- 20 F /H=10



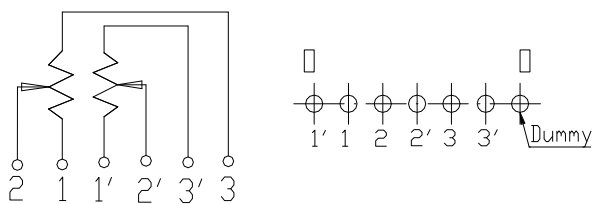
Dimensions



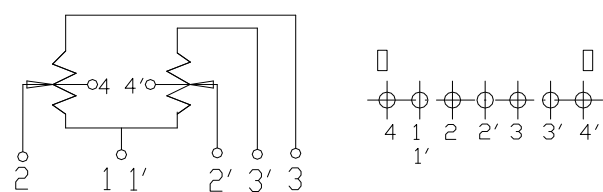
H	10	12.5
----------	-----------	-------------

Circuit Explanation

Single Standard



Single Center TAP





14mm Snap-in Insulated Potentiometers

Shaft Type

KC Type							
L	15	20	22.5	25	27.5	30	32.5
A	4.5	7	12	12	12	12	12

F Type									
L	15	20	22.5	25	27.5	30	32.5	35	37.5
F	4.5	7	7	12	12	12	12	12	12

**14mm Snap-in Insulated Potentiometers****General**

Operating temperature	-10 °C ~ +70 °C
Manual soldering	300 °C Max 3sec

Electrical Characteristics

Total resistance	5K Ω ~ 500K Ω
Resistance tolerance	$\pm 20\%$
Resistance taper	A B C
Sliding noise	Less than 80 mV
Residual resistance	Less than 20 Ω
Insulation resistance	More than 100M Ω at DC 250V
Rated power(W)	0.05W
Max. Operating voltage	AC 50V (for AC only)
Withstand voltage	1 Minute at AC 300 V
Gang error	-40dB ~ 0dB ≤ 3 dB

Mechanical Characteristics

Total rotational angle	300° \pm 5°
Rotational torque	15 ~ 150 gf.cm
Shaft push-pull strength	8Kgf.cm Max
Rotational stopper strength	6Kgf.cm Max
CC torque	<input type="checkbox"/> 50 ~ 150 gf.cm
Rotational life	15,000 Cycles.